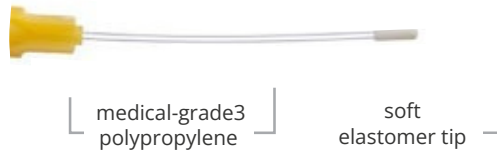


Flexible Plastic Feeding Tubes 3R

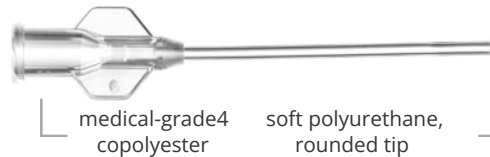
Instech's plastic gavage needles are flexible to reduce the risk of trauma, translucent to visualize delivery, and disposable to eliminate the cost of cleaning and the chance of compound crossover. Flexible tubes are an animal welfare refinement¹ over rigid metal tubes which have been shown to cause significantly more esophageal inflammation².

POLYPROPYLENE FEEDING NEEDLES

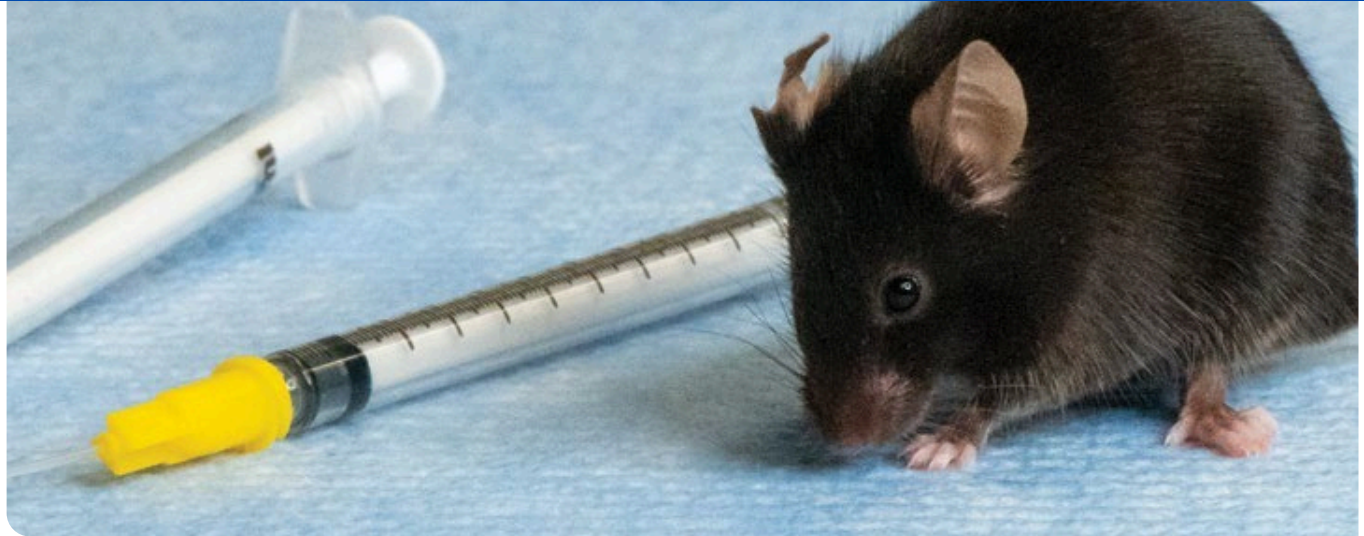


The tube and luer hub are made of the same material used to make plastic syringes. The soft, bulb-shaped tip is designed to reduce the chances of inadvertent placement in the trachea and perforation of the esophagus. Available in 14 sizes for rodents ranging from mouse pups to rats to rabbits.

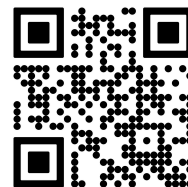
POLYURETHANE FEEDING NEEDLES



These tubes feature a larger inner diameter for easier delivery of viscous compounds and a straight tip that wipes clean to reduce the chance of compound aspiration. Available in two sizes, 13ga for rats and 16ga for mice, and a special version for dosing size 9 capsules.



Founded in 1971, Instech is a leader in the design and manufacturing of infusion, sampling and dosing equipment for laboratory animal research. Instech's products are manufactured in the USA. They are available in North America, Europe and India through a direct sales force and elsewhere through a network of approved distributors.



Feeding Tubes for Rodents

Flexible Plastic Feeding Tubes

PN: 250 pc box
(PN: 50 pc box)

Tube size
(IDxOD)

Material

Length, Dead Volume

mouse

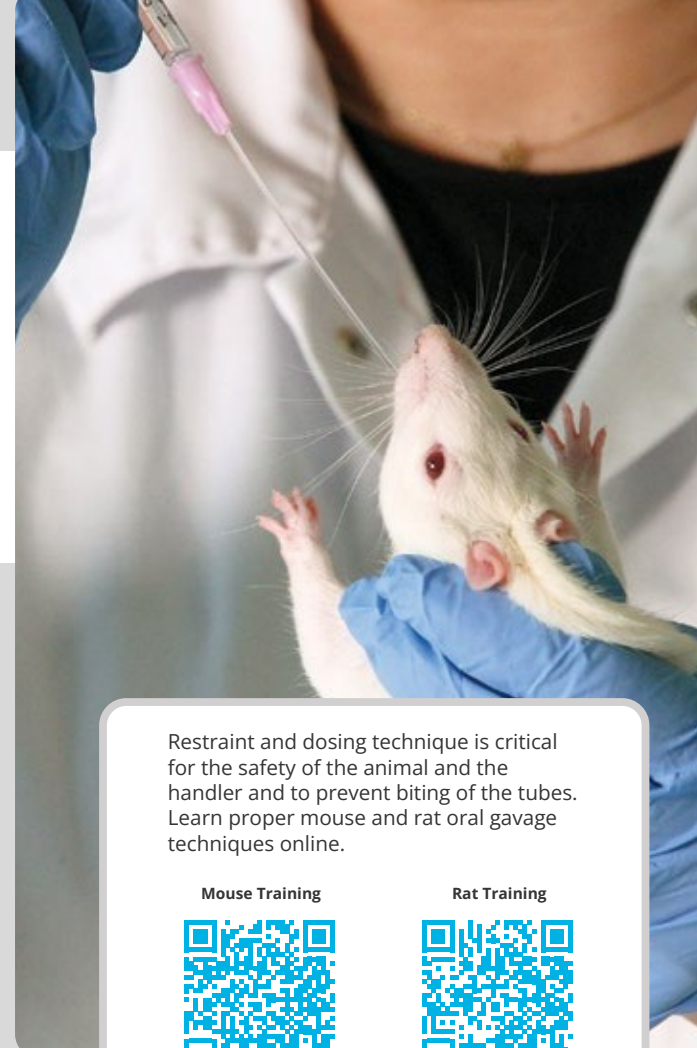
Weight	Part Number	Tube Size (IDxOD)	Material	Length, Dead Volume
< 20g	FTP-22-25 (FTP-22-25-50)	22ga (0.4x0.7mm)	PP	25mm (1in), 3µL 1.2mm tip diameter
	FTP-20-30 (FTP-20-30-50)	20ga (0.5x0.9mm)	PP	30mm (1.2in), 6µL 1.6mm
20-30g	FTP-20-34 (FTP-20-34-50)	20ga (0.5x0.9mm)	PP	34mm (1.3in), 6µL 1.6mm
	FTP-20-38 (FTP-20-38-50)	20ga (0.5x0.9mm)	PP	38mm (1.5in), 7µL 1.6mm
> 30g	FTPU-16-38 (FTPU-16-38-50)	16ga (1.0x1.6mm)	PU, PET	38mm (1.5in), 30µL 1.6mm

rat

Weight	Part Number	Tube Size (IDxOD)	Material	Length, Dead Volume
< 100g	FTP-18-30 (FTP-18-30-50)	18ga (0.7x1.2mm)	PP	30mm (1.2in), 12µL 2.3mm
	FTP-22-38 (FTP-22-38-50)	22ga (0.4x0.7mm)	PP	38mm (1.5in), 5µL 1.2mm
100-200g	FTP-18-38 (FTP-18-38-50)	18ga (0.7x1.2mm)	PP	38mm (1.5in), 15µL 2.3mm
	FTP-18-50 (FTP-18-50-50)	18g (0.7x1.2mm)	PP	50mm (2in), 20µL 2.3mm
200-300g	FTP-15-64 (FTP-15-64-50)	15ga (1.2x1.8mm)	PP	64mm (2.5in), 70µL 3.0mm
	FTP-18-75 (FTP-18-75-50)	18ga (0.7x1.2mm)	PP	75mm (3in), 30µL 2.3mm
> 300g	FTPU-13-88 (FTPU-13-88-50)	13ga (1.5x2.4mm)	PU, PET	88mm (3.5in), 155µL 2.4mm
	FTPU-C9-85 5	13ga (1.5x2.4mm)	PU, PET	85mm (3.4in), 150µL 3.3mm for size 9 capsules
	FTP-15-78 (FTP-15-78-50)	15ga (1.2x1.8mm)	PP	78mm (3.1in), 90µL 3.0mm
	FTP-15-100 (FTP-15-100-50)	15ga (1.2x1.8mm)	PP	100mm (4in), 110µL 3.0mm

large rodents

	FTP-13-90 (FTP-13-90-50)	13ga (1.6x2.4mm)	PP	90mm (3.5in), 180µL 3.5mm
	FTP-13-150 (FTP-13-150-50)	13ga (1.6x2.4mm)	PP	150mm (6in), 300µL 3.5mm



Restraint and dosing technique is critical for the safety of the animal and the handler and to prevent biting of the tubes. Learn proper mouse and rat oral gavage techniques online.

Mouse Training



Rat Training



1. "Refining procedures for the administration of substances," Report of the BVA/WF/FRAME/RSPCA/UF/FAW Joint Working Group on Refinement. Laboratory Animals (2001) 35, 1-41.
2. "Comparison of Plastic and Metal Oral Gavage Needles in C57BL/6 Mice," Herrod, Maje, Kim, Vernon, Healy, Bates, Stanislawczyk, Sowiak, Veterinary Sciences, Bristol Myers Squibb; Discovery Toxicology, Bristol Myers Squibb (2023).
3. Polypropylene is USP Class VI certified and compliant with FDA 21 CFR 177.1520. Colorants added to hubs are compliant with FDA 21 CFR 178.3297, except black. Elastomer tip is compliant with FDA 21 CFR 177.1210.
4. ISO 10993 Compliant.
5. Capsule dosers sold in boxes of 20 (10 sterile pouches of two).

EO All models sterilized by EtO gas. Plastic tubes packaged five per pouch.

Species suggestions have been compiled based on published papers and anecdotal reports; they are not definitive. Try a variety of sizes to determine what works best for you.

Request free samples at www.instechlabs.com/sample-request

MATERIAL KEY
PP: polypropylene (tube and hub)
PU: polyurethane (tube)
PET: polyethylene terephthalate glycol-modified (hub)

